

BEAUTIFUL KITCHENS

FIND
YOUR DREAM
DESIGN INSIDE



October 2010

£3.99

\$8.99/AUS\$10.75/

NZ\$13.25

22
PAGE
SPECIAL

THE SECRET
TO A

perfect kitchen

- * How to buy for your budget
- * Planning right for your space
- * Cut-out-and-keep design tool

EAS FOR EVERY SHAPE

Pretty blue galley
Compact red hi-gloss
Curvy black walnut

ORAGE SOLUTIONS

oired interiors for all

EASY KITCHEN DINING

Three simple rules for getting it right



GREAT IDEA

The remote control for the extractor hood has been concealed in a spice drawer

FEATURE DEBORAH OSBORNE-WALKER
PHOTOGRAPHY MARCUS PEELE

make a more welcoming kitchen. 'We had no problem finding a designer,' recalls Sarah. 'Lots of my friends had used Giles Slater at Figura. His premises used to be situated near to our home and I was impressed with his window displays.'

With Giles on board, Sarah and Neil put some thought into the kitchen design. 'I had to have an island,' explains Sarah. 'The previous one I had was great for helping me socialise with the children at the end of the day and I could relax with Neil when he came in from work.'

Smart English oak mixed with hand-painted furniture was the solution to all their needs and at the centre sits a multifunctional island. 'I love the look and feel of wood and, if you choose the right cabinets, it won't date,' remarks Sarah.

To finish the room, the couple chose two different floor coverings that demarcate the indi-

vidual zones of the kitchen. The mottled, dark slate in the prep area is perfectly practical, while the oak adds a warm and homely touch.

A year after the kitchen was installed, Sarah and Neil found their family used the ground floor so much, they added a conservatory onto the kitchen, so there was more room when they had parties or at Christmas. 'The whole lower level benefits from the morning sun,' smiles Sarah.

Now the couple are using their kitchen more, they have had plenty of time to reflect on the practical design and what tweaks they could make. 'I only have one regret and that's that I didn't install more plug sockets. I wish I had opted for a bank that popped up from the worktop. Plus, if there had been more choice of steam ovens and hot water taps, I would have twisted Neil's arm to have those, too,' laughs Sarah.

IKK

SPICE DRAWER
A wide, divided drawer opens to reveal an array of seasonings. To one side are the controls for the extractor

COOKING AREA
The five-burner hob by Wolf has been twinned with a downdraft extractor that rises from the worktop



PRICE GUIDE
Total cost
£50,000
for this Figura kitchen, excl building work

THE KITCHEN AT A GLANCE

DESIGN & CABINETRY

- Giles Slater at **Figura**, The Old Bakery, The Green, Chiddingfold, Surrey GU8 4TU (01428 686500) www.figura.co.uk
- Bespoke English oak furniture with hand-painted tulipwood and MDF cabinetry

WORKTOPS

- 60mm Verdi San Francisco granite. Price per linear m **£400**

- 60mm solid maple. Price per linear m **£270**

FLOORING

- Beijing Green Slate, Stonell. Price per sq m **£35**
- Brushed and lacquered European oak, Angelo Flooring. Price per sq m **£48**

SINKS & TAP

- Undermounted single-bowl sink in stainless steel, for similar try 3325W Icerock, Kohler **£318**

- Undermounted half-bowl sink in stainless steel, for similar try 3333W Icerock, Kohler **£234**
- 4841PF Mimas single-lever monobloc mixer tap in pewter, Perrin & Rowe **£209**

APPLIANCES (shown)

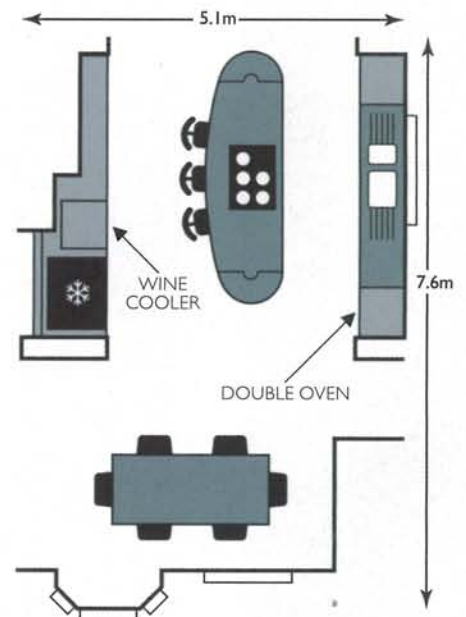
- Built-in double oven, for similar try BX280, Gaggenau **£6,650**
- CT36G/S five-burner gas hob, Wolf **£1,845**
- DD36 downdraft extractor, Wolf **£1,480**
- Integrated American fridge freezer, for similar try 228FIRS, Amana **£2,500**
- D-264C built-in wine cooler, Eurocave **£3,002**

APPLIANCES (not shown)

- Freestanding microwave, Panasonic **£70**
- Fully integrated dishwasher, Neff **£578**

For stockists, see page 152

PLAN SCALE 1cm:1m





had to complement the flooring. The calming pale blue-grey shade she chose does just that. It helps retain a sense of space and light but is prevented from looking too clinical with a warm wood breakfast bar on the island and a chunky piece of timber within the overmantel. Dark granite worktops elsewhere echo the stone floor.

Despite having a clear idea of the stylish result she was after, Emma says that having a kitchen company look after every step of the planning, design and installation process was invaluable. 'Nothing could have prepared me for living without my kitchen for so long. So, having a team on which I could rely, took away any element of doubt or worry I had,' she remembers.

Now that the kitchen is finished, Emma concludes that the new room, and all the hard work that went into the installation, has been worth it. 'It took me long enough to pluck up the courage to go for it but the result is reward enough. Now the children can sit and do homework or crafts at the table, chat to me while sitting at the breakfast bar if I'm cooking dinner or snuggle up on the sofa and read. All three love coming home from school and spending time doing what they enjoy. Our new kitchen has given us more quality time together,' she smiles. **BK**

FEATURE NICOLA WILKES PHOTOGRAPHY MATT CANT

← LARDER CUPBOARD

Emma asked for lots of storage in her new kitchen. This **floor-to-ceiling cupboard** is perfect for housing dry goods, while her collection of aprons have a permanent home on the side



← WET AREA

A **Classic Shaker 900 double-bowl sink** by Shaws of Darwen is in keeping with the period style of the house, while a **bridge-mounted Ionian tap** by Perrin & Rowe has porcelain levers to match the sink's ceramic finish

COOKER →

Emma replaced her existing range with a **sleek, navy Aga**. 'Our house dates back to the 15th century, so it's nice to have that real mix of old and new,' she says



PRICE GUIDE
Starting price
£15,000
for a Cymru
Kitchens design

THE KITCHEN AT A GLANCE

DESIGN & CABINETRY

- William Fox at **Cymru Kitchens**, Old Mineral Water Factory, Turner Street, Newport, South Wales NP19 7BA (01633 676767) www.cymrukitchens.com
- Bespoke, hand-painted tulipwood cabinetry with glass doors from the Woodcroft range



WORKTOPS

- Verde Ubatuba granite. Price per linear m, approx **£350**
- Oak. Total cost, including templating and fitting **£500**

FLOORING

- Grey Riven slate tiles, Mandarin Stone. Price per sq m, from **£18.80**

SINK & TAP

- Classic Shaker 900 double-bowl ceramic sink, Shaws of Darwen **£435**
- 4193CPWPC Ionian two-hole monobloc mixer tap with deck-mounted porcelain levers, Perrin & Rowe **£251**

APPLIANCES (shown)

- Four-oven, dual-fuel Aga in Dark Blue, approx **£8,000**
- NNST477SBPQ built-in microwave, Panasonic **£150**
- Existing integrated fridge freezer, for similar try S85628SKI, AEG-Electrolux **£1,575**



APPLIANCES (not shown)

- Fully integrated dishwasher, Bosch **£546**

For stockists, see page 152

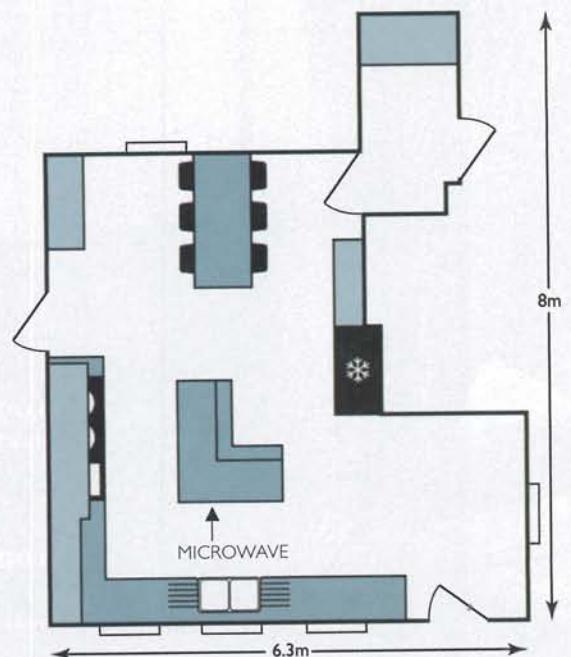
PLAN SCALE 1cm:1m

COOL STORAGE

Emma and Simon kept their existing fridge freezer but asked Cymru Kitchens to build in plenty of storage and shelves around it. 'Now everyone thinks it's new,' reveals Emma.

DINING AREA

The couple re-sanded their 14-year-old Habitat dining table and bought new chairs to go with it. For similar, try Clio chairs by Danetti. 'It's made all the difference and the table now looks clean and modern – revived just like the kitchen,' smiles Emma.





WET AREA

A **ceramic Modultop sink** by Kohler blends in with the pale worktop and sits with an **Ionian tap** by Perrin & Rowe



ANNETTE AND GERARD LYONS LIVE IN AN 18TH-CENTURY PROPERTY IN KENT WITH THEIR CHILDREN, ELF, 19, LULU, 16, AND GERARD, 13

Moving to the countryside where they could keep their horses and have a better quality of life, their new 18th-century country house in Kent was every bit as good as the Lyons family had dreamt. Unfortunately, while Annette and Gerard, an economist, were happy to renovate the property, which had barely been touched since the 1950s, the project to transform it into a family home was bigger than they anticipated.

The plumbing and wiring was replaced, but when asbestos was discovered under the floorboards, the family took up residence in a cottage in the grounds. The kitchen, complete with dated melamine cabinets and white tiles, which had been 'updated' with turquoise emulsion, was central to the arrangement and it was knocked through with the gun room, boot room and larder to create one large space.

Taking the former country house back to its original elegance was essential and the kitchen was to be no exception as Annette, an artist, envisaged a classically styled room with a subtle modern twist. 'The kitchen was originally reserved for the servants and completely separate to the rest of the house,' she explains. 'I wanted it to be a real country kitchen that could put up with dogs and dirty boots but could still look fabulous for entertaining.'

Wandering around various local showrooms, it was designer Scott Nicholson at Chamber Furniture with whom Annette and Gerard clicked. 'I felt that Scott understood family life and had the flair to create what was in my mind: a kitchen that had a period feel but without looking tatty or muddled,' smiles Annette.

Scott and Annette then discussed what she wanted: hand-painted and wooden in-frame cabinetry that would not only echo the property's heritage, but also bring a touch of traditional style. A round oak breakfast bar set into the island continues this theme.

Of all the materials the couple selected, it's the marble worktops and splashbacks that ooze decadence. 'As a child I remember seeing slabs of white marble in a shop and I wanted to create that cool feel here,' says Annette.

With the kitchen complete, it seems Annette has been granted her wish of an elegant country scheme. 'The room has a very different purpose now,' she reveals. 'It's become the place that we all congregate at any time of the day.' **BK**



GREAT IDEA

Save precious storage space by having pull-out trays built in to your cabinetry

THE OWNER

Annette couldn't be happier with her finished hand-painted and solid oak country kitchen. 'It's a practical, elegant space,' she says

BUILT-IN STORAGE

Designer Scott came up with an ideal solution for a pair of oak trays by incorporating them neatly into their own slots in the furniture

GLASS-FRONTED UNIT

Annette suggested that a wall cupboard should be glass fronted, making it into a feature as well as a place to display her collection of blown glass from Glory Art Glass



PLATE RACK

An oak rack houses Hellebore crockery by Emma Bridgewater



FEATURE TRACEY WILLIAMS PHOTOGRAPHY IAIN KEMP

PRICE GUIDE
 Starting price
£35,000
 for a Chamber Furniture kitchen

THE KITCHEN AT A GLANCE

DESIGN & CABINETRY

- Scott Nicholson at **Chamber Furniture**, The Old Timber Yard, London Road, Halstead, Kent TN14 7DZ (01959 532553) www.chamberfurniture.co.uk
- Bespoke solid oak furniture with hand-painted MDF cabinetry and glass doors



WORKTOPS



- Statuario Carrara marble. Price per sq m **£800**
- Solid English oak. Price per sq m **£300**

FLOORING

- Tumbled black marble tiles, Naos Floors. Price per sq m **£91.65**

SINK & TAP

- 19938W Modultop undermounted single-bowl ceramic sink, Kohler **£295**
- 4193NIWPC Ionian two-hole monobloc mixer tap in nickel with deck-mounted porcelain levers, Perrin & Rowe **£262**

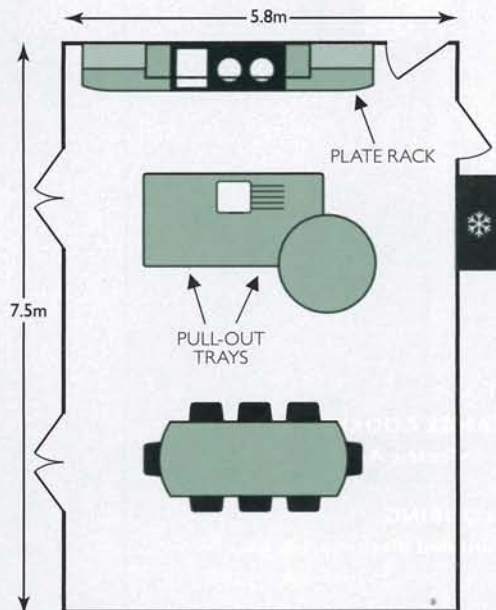
APPLIANCES (shown)

- Three-oven electric Aga with integrated module in Pewter **£11,695**
- SPC1100 canopy extractor hood in stainless steel, WS Westin **£767**

APPLIANCES (not shown)

- Built-in steam oven, Miele **£1,269**
- Built-in microwave, Miele **£680**
- Fully integrated fridge, Miele **£658**
- Built-in undercounter fridge with pull-out drawer, Liebherr **£610**
- Fully integrated dishwasher, Miele **£940**

☎ For stockists, see page 152
 PLAN SCALE 1cm:1m



BK says For a flush look, build cupboards and appliances into wall cavities. This allows more floor space for other elements, such as islands

HIDDEN APPLIANCES

Space was borrowed from the adjacent larder room, so that the Miele fridge could be recessed rather than take up valuable floor space. The cupboards are painted in Slate 1 and the walls in Slate 2, both by Paint & Paper Library

DOOR FURNITURE

Pretty clear glass knobs from Willow & Stone give the traditional wood cabinetry a delicate yet contemporary touch



FLOORING

Piedra Plana limestone tiles from Stone Age have an antique French finish

BLIND

For a similar Roman blind, try the Heligan fabric by Laura Ashley

RO AND JOHN PALMER LIVE IN A COTTAGE IN SOMERSET WITH THEIR CHILDREN, MAX, SIX, AND ZOE, FOUR, AND GOLDEN RETRIEVER, TED

When the Palmers decided to redesign the ground floor of their four-bedroom house, they weren't short of ideas as to how they wanted their new kitchen to look. Full-time mum Ro, in particular, had always been a lover of painted, classic-style cabinetry and husband John, a CEO of a legal services company, had a good idea of the features he wanted to include. 'John and I have worked on other properties and completed house renovations, so it was just a question of focusing our ideas and fitting them into the available space,' says Ro. 'We wanted an island unit, a stone floor and a cupboard to house small appliances, such as the toaster and food processor.'

The couple decided that in order to gain the spacious kitchen they were after, with an adjoining dining and living area, they would need to knock three rooms into one. The existing kitchen – small and badly designed – was to become the new living area and was knocked through, along with a playroom and dining room. Meanwhile, the family moved into rented accommodation while the work was carried out and continued their search for a kitchen designer – a task that proved to be a relatively easy process. 'I spotted an advert for a Thomas & Thomas kitchen,' recalls Ro. 'It had a stunning picture of an island painted in duck-egg blue, so we decided to take the plunge and get in touch. I didn't really look anywhere else.'

After visiting the Palmers and taking into account their ideas, designer Robert Entwistle came up with a kitchen that encompassed all of Ro and John's requirements. The result was a traditional, hand-painted design with a large island and a warm, homely feel.

Satisfied with the cabinetry and keen to add some finishing touches to the room, Ro contacted interior designer Joyce Porter. 'Joyce pulled the scheme together,' explains Ro. 'She sourced the fabric for the blinds, suggested chunky lights and mirrors in the alcoves and encouraged me to change the island colour. It was originally cream but Joyce suggested giving it the "wow" factor. We spotted the pink shade on a paint chart, so I painted a piece of paper and moved it around the cupboards for two months to check that I liked it!'

Now that the room is complete, Ro couldn't be happier with the result. She has a spacious, welcoming kitchen with a statement island and beautiful hand-painted cabinetry in complementary colours – exactly the look she had hoped to achieve. **BS**

FEATURE JANE STACEY PHOTOGRAPHY HUNTLEY HEDWORTH

← WET AREA

A Normandy butler sink from Villeroy & Boch has been edged with oak so that it matches the island's worktop. Underneath, a drawer rather than cupboards means there is no more digging at the back for cleaning products.

ADDED → EXTRA

Ro's hostess trolley has been housed in a kitchen cupboard that has been purpose built by Rádus Woodworkers

GREAT IDEA

This bespoke cupboard has no kickplates, so the trolley can easily slide in and out

BK loves
 ...using two complementary colours to 'zone' different areas



PAINTED DRESSER

A **dresser unit** has been painted in a similar shade of duck-egg blue to the island in the advert that first inspired Ro. Try

Blue Charm by Paint & Paper Library

LIGHTING

Interior designer Joyce Porter sourced the **antler light** from Dar Lighting

PRICE GUIDE
 Starting price
£25,000
 for a Thomas & Thomas kitchen, cabinetry only

THE KITCHEN AT A GLANCE

DESIGN & CABINETRY

Robert Entwistle at **Thomas & Thomas**, The Cart Shed, Manor Farm Courtyard, Didcot, Oxon OX11 0ND (01235 851144) www.thomasthomas.net

Bespoke, hand-painted MDF cabinetry with glass doors

WORKTOPS

Honed Nero Impala granite. Price per linear m

4193CPWPC Ionian two-hole mixer tap in chrome with deck-mounted porcelain levers, Perrin & Rowe

£251

Pot filler tap in Silk Steel, Franke

£238

APPLIANCES (shown)

I092 Deluxe electric range cooker with induction top, Falcon

£3,874

Built-in microwave, for similar try H56W20, Neff

£340

Integrated American fridge freezer, for similar try ICBB142S, Sub-Zero

£9,236

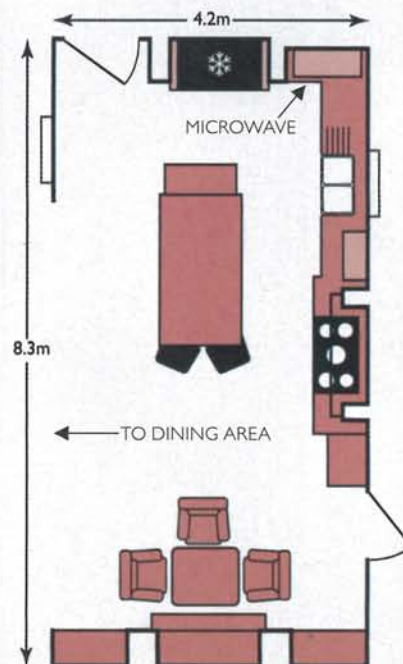
APPLIANCES (not shown)

Fully integrated dishwasher, Neff

£370

For stockists, see page 152

PLAN SCALE 1cm:1m



Oiled maple. Price per linear m

£600

£600

FLOORING

Piedra Plana limestone tiles, Stone Age. Price per sq m

£116.33

SINK & TAPS

Normandy undermounted double-bowl ceramic butler sink, Villeroy & Boch

£584





FLOORING

Oiled engineered oak boards from FPS Flooring provide a rustic edge to the Astors' classic kitchen

PENINSULA

Built to divide the kitchen from the dining room, the peninsula has open shelving to store Marianne's recipe books

LAUNDRY BIN

A pull-out drawer with solid oak compartments is positioned next to the washing machine and holds dirty laundry

PULL-OUT RINSE TAP

The separate spray by Perrin & Rowe is situated close to the sink and is ideal for rinsing fruit and vegetables, as well as cleaning the wet area

WET AREA

Marianne chose a simple Oberon mixer tap in chrome by Perrin & Rowe and a hot and cold filtered water tap by In-Sink-Erator. Great for making instant hot drinks, it was the couple's best buy



sway my choice,' concedes Marianne. 'I don't consider myself a fussy person, but as soon as I met designer Jason King and saw some examples of the company's work, I knew it was right for what I wanted.'

Having spent a year browsing magazines for inspiration, Marianne already had a good idea of what her kitchen would look like. 'It had to be a good, honest kitchen – not a design that was trying to be something it wasn't,' she explains. 'Above all, I wanted a working area, a place for us to spend time as a family, and somewhere that I would feel comfortable by myself, as I like to be here on my own.'

With this in mind, Marianne chose painted Shaker-style cabinetry to reflect the simple, elegant design of her Victorian house, although she initially had reservations about altering the layout. 'The design of the previous kitchen worked brilliantly, so I was worried about changing it,' she admits. Fortunately, the galley style of the room lent itself to the new, extended layout perfectly, while Marianne's idea of adding a small peninsula at one end of the room created shape and subtly separated the kitchen and living area.

The green-grey colour of the units was inspired by the bustling city that the couple live in. 'I wanted it to reflect the area around us, rather than looking too country-like,' explains Marianne. 'It's the main room in the house and a place that's very important to us. When my children come home and bring their friends, it's a great place to be. I hate any of them cooking in it, though – it's my kitchen!' she smiles. **BK**





OVEN BANK

A **built-in single oven** has been positioned at waist height so that hot dishes can be removed safely. Above, a **combination microwave** provides additional cooking options. Both by Miele **COOLING**

The couple's integrated **American-style fridge freezer** is from John Lewis and boasts an integral wine cooler

PRICE GUIDE
Total cost
£24,000
for a similar Robert Charles kitchen

THE KITCHEN AT A GLANCE

DESIGN & CABINETS

- Jason King at **Robert Charles**, Cornishway East, Galmington Trading Estate, Taunton, Somerset TA1 5LZ (01823 252433) www.robertcharles.co.uk
- Bespoke, hand-painted tulipwood furniture

WORKTOPS

- African Black granite. Price per linear m, from **£310**

FLOORING

- Pre-oiled engineered oak boards, FPS Flooring. Price per sq m **£43**

SINK & TAPS

- 3352 Icerock undermounted one-and-a-half-bowl sink in stainless steel, Kohler **£568**
- 4866CP Oberon C-spout monobloc mixer tap in chrome with separate rinse, Perrin & Rowe **£290**



- HC1100 hot and chilled filtered water tap in chrome, In-Sink-Erator **£372**
- ISE65 waste disposal unit, In-Sink-Erator **£189**

APPLIANCES (shown)

- H5240BP built-in single pyrolytic oven, Miele **£1,257**
- H5040BM built-in combination microwave, Miele **£1,551**
- KM2034 five-burner gas hob, Miele **£822**
- Chimney extractor hood in stainless steel, for similar try DA5495W, Miele **£881**
- JLWFF1102 integrated fridge freezer with integral wine cooler, John Lewis **£2,299**

APPLIANCES (not shown)

- Fully integrated dishwasher, Neff **£578**
- Freestanding washing machine, John Lewis **£599**
- Freestanding tumble dryer, John Lewis **£299**

☎ For stockists, see page 152
PLAN SCALE 1cm:1m

